



FAQ

Frequently asked questions

Measure Protection Keys



Race Studio 3


Measure Protection Keys

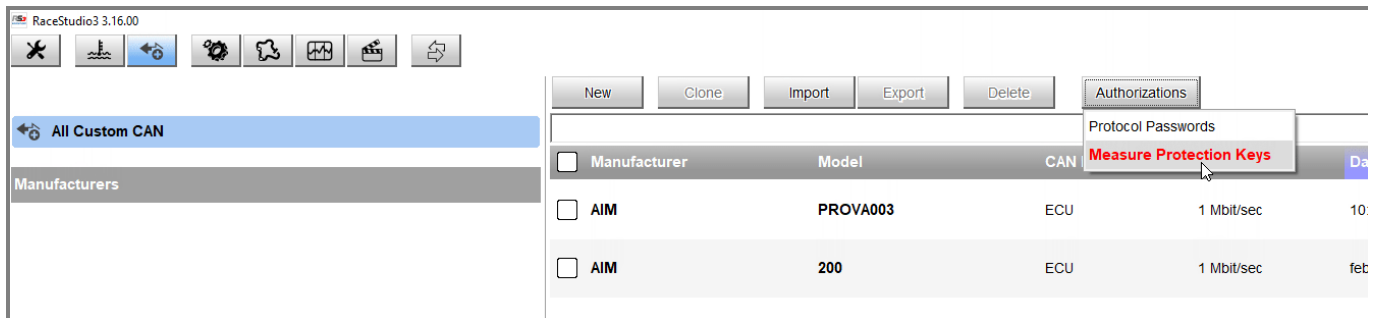
Question:

Can lock my device configuration settings to avoid being modified?

Answer:

Yes, you can protect your device settings creating a file that works as key and is called "Measure Protection Key". It can be created from RS3 CAN Protocols page. To **create** a protection key:

- run RS3
- click "CAN Protocols"  icon
- press "Authorizations -> Measure Protection Keys"



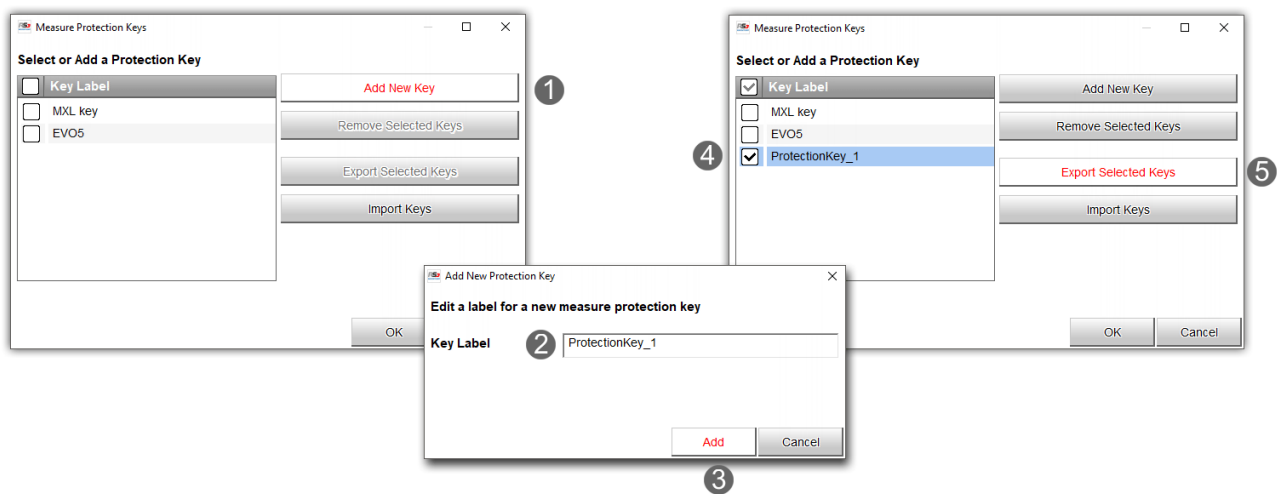
Race Studio 3

- “Measure Protection Keys” panel appears: it shows the list of existing protection keys
- click “Add New Key” (1): the related panel appears allowing you to create an identification label for the key the software will automatically create
- fill in the name (2) and click “Add” (3) to add the key to the list

N.B.: you fill a text that is not the protection key but it’s just the label to identify the key.

- you come back to the previous panel: the label you created appears in the list (4)
- press “Export Selected Keys”: this way the software will generate a file containing the selected protection key (in .usrpk format).

Warning: it is very important that this file is saved and exported in safe folder of your PC and possibly also on a pen drive so that it is always available in case you are working on another PC or you have to change the PC. This because if the key is lost the configuration cannot be modified.




In “Measure Protection key” panel are also these buttons:

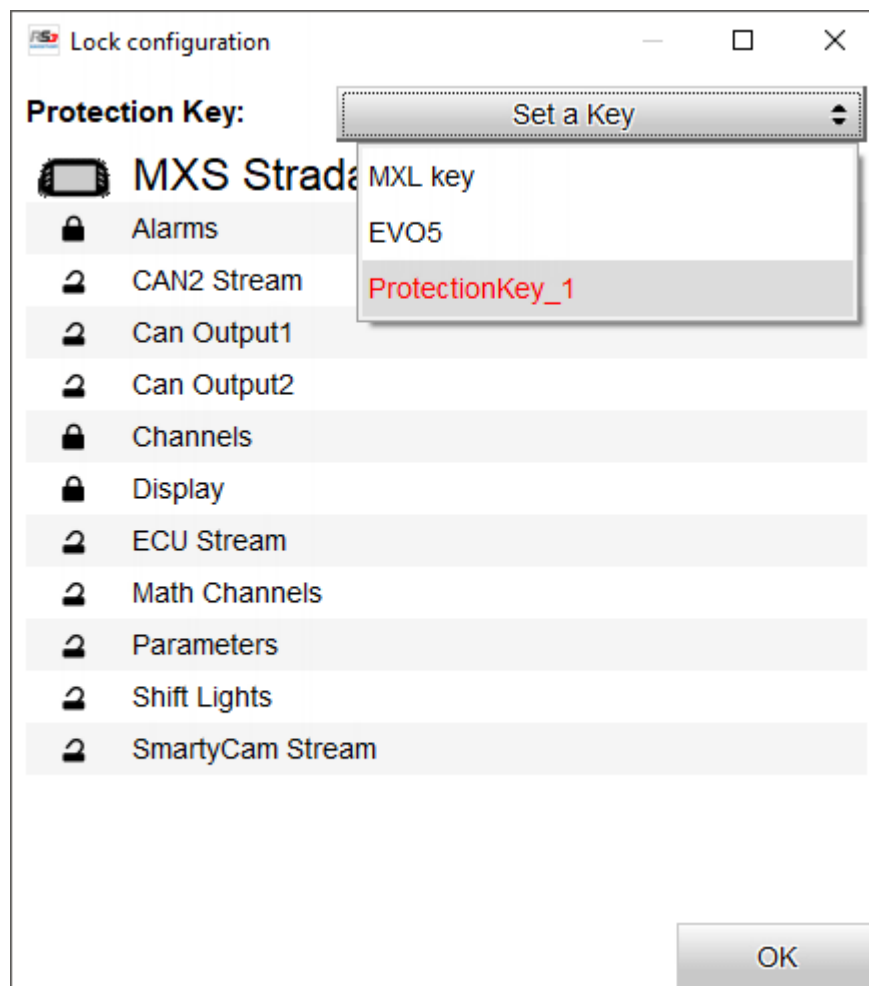
- “Remove Selected Keys”: removes the label from the list
- “Import Keys”: imports protection keys from another PC or from a different device to modify the configuration the keys are set on.

Once the “Protection Key” created press “OK”.

Race Studio 3

to **use** the "Protection Key" proceed this way:

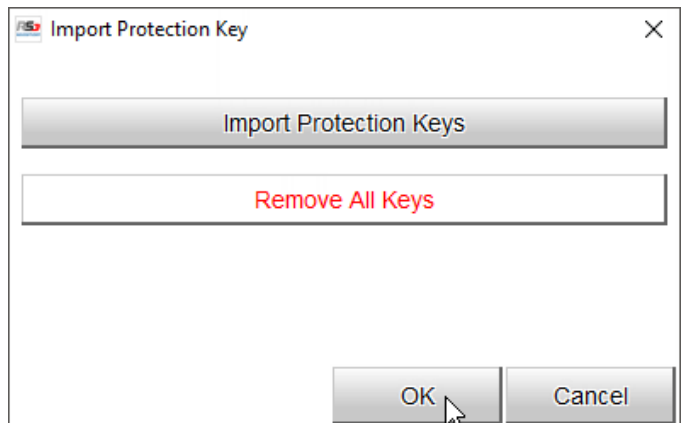
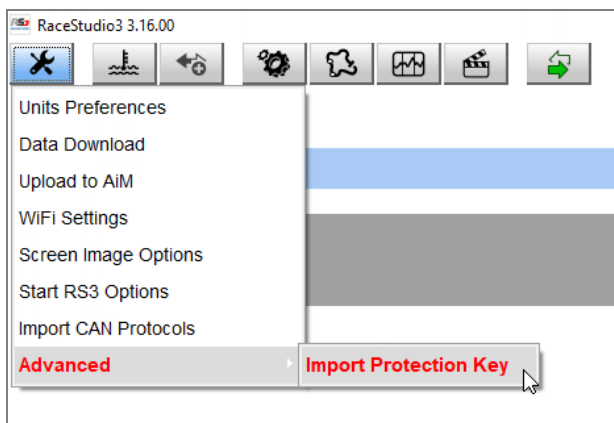
- run the software
- click "Configurations"  and modify the device configuration
- press "Save" or "Transmit" a panel appears showing the layers of the device configuration each with a padlock open by default;
- click each padlock to lock it: in the example below alarms, channel and display pages have been locked;
- use "Set a Key" button to select the key you created and apply it to that setting.



Race Studio 3

To **remove** all protection keys stored in the software:

- follow this path “Preferences”  -> “Advanced” -> “Import Protection Keys”
- the related panel appears: press “Remove All Keys” and then “OK”.



Please note: if you remove all the protection keys you won't be able to modify your device configuration unless you do re-import them; for this reason we recommend to always make a backup copy of the key files.